

CWSA Navy G01

Central Washington Soccer Academy
 Yakima, WA

G01 total strength=1054

attack=2.92 defense=1.99

fall league = PSPL Premier U13

spr league = Spr PSPL SuperLeague U13

notes= Washburn 2013, 2014

alt names used:

Venues played:

2014 Clash At the Border Gold U13

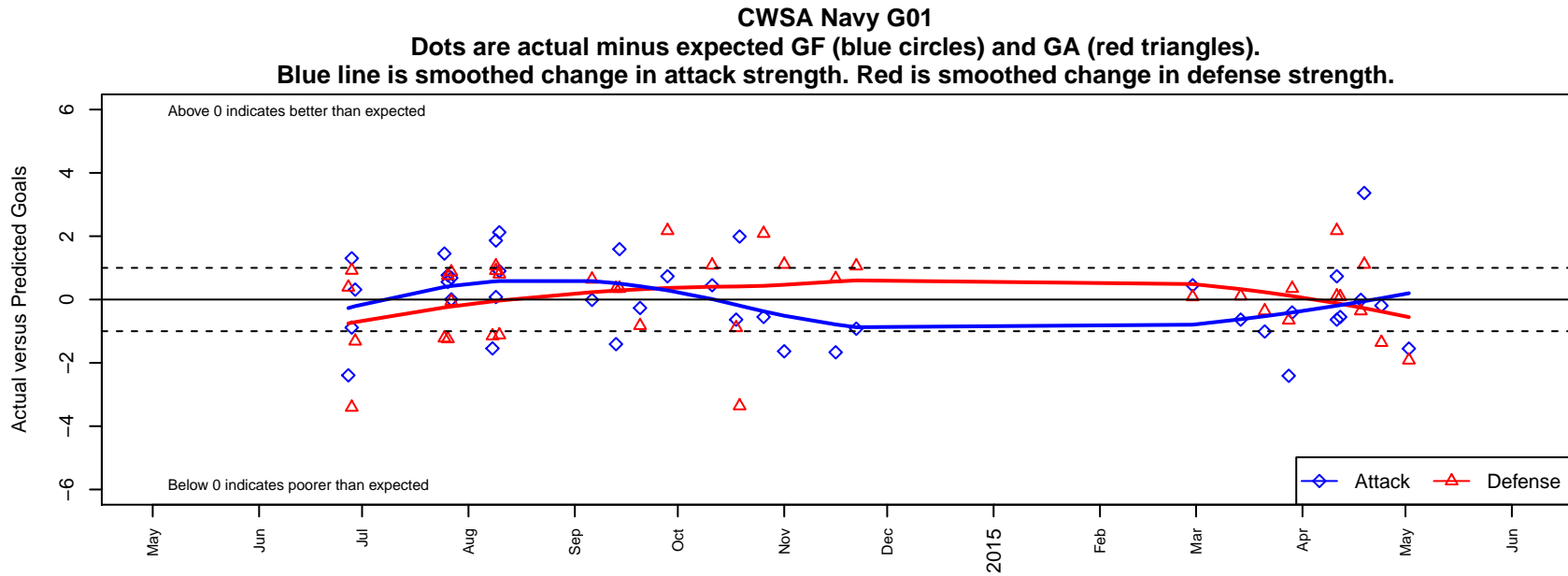
2014 Crossfire Select Cup GU13 Gold

2014 Puma Rimland Pacific Cup Premier U13

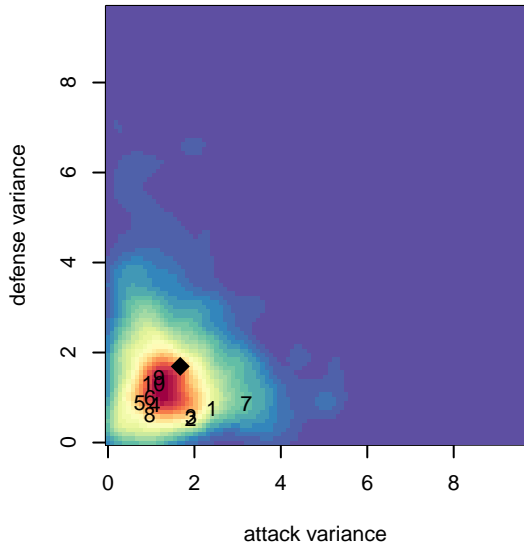
2014 PSPL Premier U13

2014 Spr PSPL SuperLeague U13

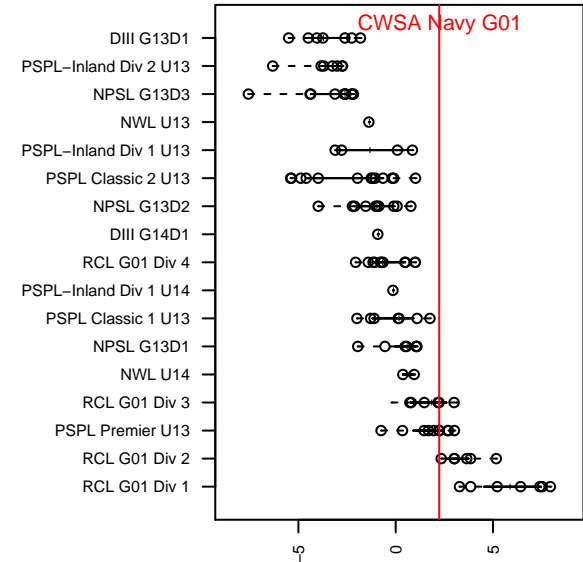
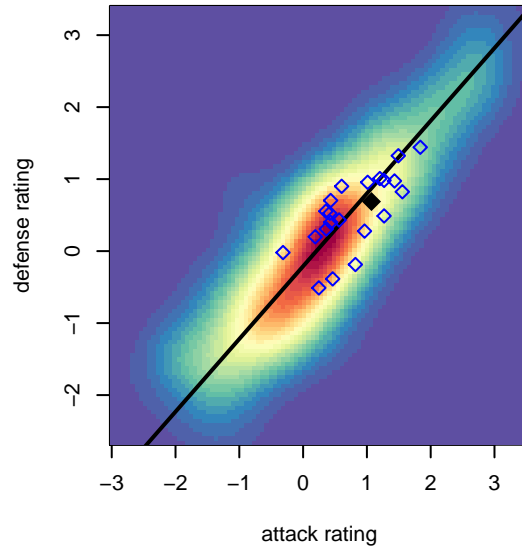
2014 WA Cup GU13 Gold/Platinum U13



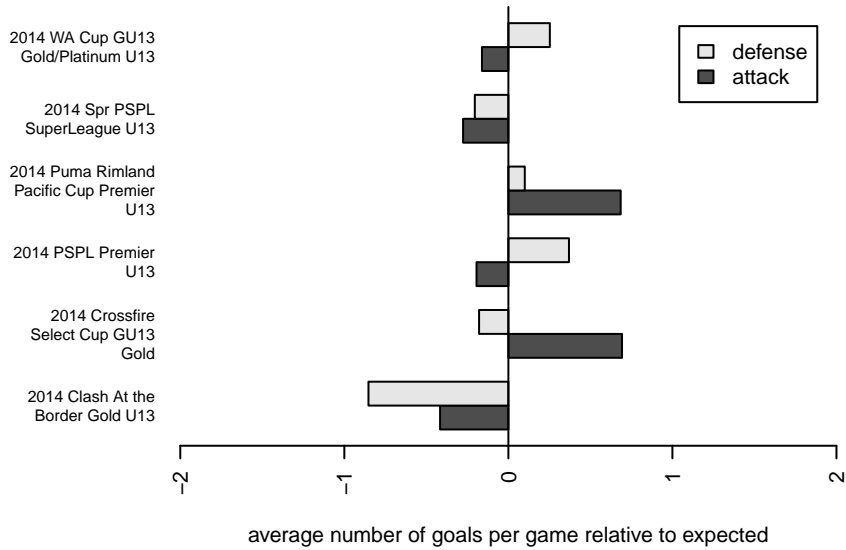
**attack and defense variance (black dot)
relative to other teams
and top 10 in region**



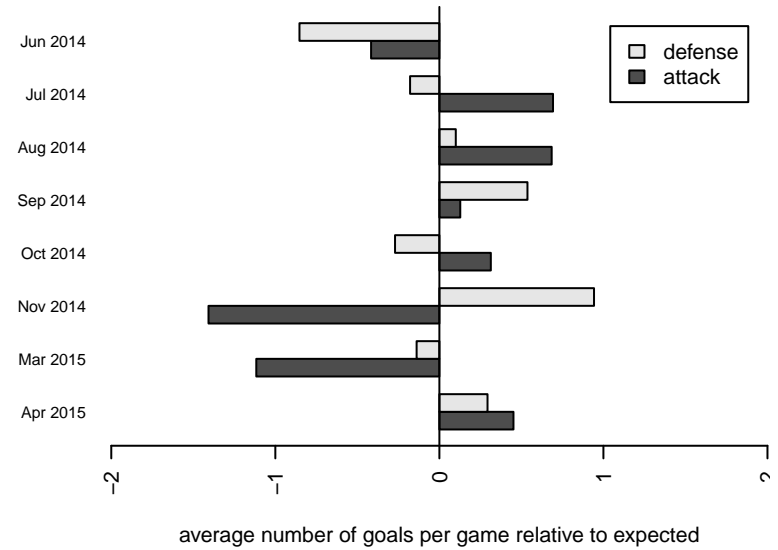
**attack and defense rating
relative to others at age
and all opponents in last 13 months**



Performance relative to 13 month average



Performance relative to 13 month average



| date | home | | away | | venue | pred.home | pred.away |
|------------|---------------------------|---|-----------------------------|---|--|-----------|-----------|
| 2015-05-02 | ASE Emerald G01 | 4 | CWSA Navy G01 | 0 | 2014 Spr PSPL SuperLeague U13 | 2.08 | 1.55 |
| 2015-04-24 | MVP Marauders Navy G01 | 3 | CWSA Navy G01 | 1 | 2014 WA Cup GU13 Gold/Platinum U13 | 1.64 | 1.19 |
| 2015-04-19 | CWSA Navy G01 | 5 | Spokane Foxes Premier G01 | 0 | 2014 Spr PSPL SuperLeague U13 | 1.64 | 1.11 |
| 2015-04-18 | CWSA Navy G01 | 2 | FC Spokane Black 1 G01 | 2 | 2014 Spr PSPL SuperLeague U13 | 2.01 | 1.64 |
| 2015-04-12 | ASE Emerald G01 | 2 | CWSA Navy G01 | 1 | 2014 WA Cup GU13 Gold/Platinum U13 | 2.08 | 1.55 |
| 2015-04-11 | CWSA Navy G01 | 1 | Spokane Foxes Premier G01 | 1 | 2014 WA Cup GU13 Gold/Platinum U13 | 1.64 | 1.11 |
| 2015-04-11 | WA East G01 | 0 | CWSA Navy G01 | 2 | 2014 WA Cup GU13 Gold/Platinum U13 | 2.17 | 1.27 |
| 2015-03-29 | CDA Sting White Caps G01 | 1 | CWSA Navy G01 | 2 | 2014 Spr PSPL SuperLeague U13 | 1.35 | 2.41 |
| 2015-03-28 | CDA Sting White Caps G01 | 2 | CWSA Navy G01 | 0 | 2014 Spr PSPL SuperLeague U13 | 1.35 | 2.41 |
| 2015-03-21 | FC Spokane Black 1 G01 | 2 | CWSA Navy G01 | 1 | 2014 Spr PSPL SuperLeague U13 | 1.64 | 2.01 |
| 2015-03-14 | Spokane Foxes Premier G01 | 1 | CWSA Navy G01 | 1 | 2014 Spr PSPL SuperLeague U13 | 1.11 | 1.64 |
| 2015-02-28 | CWSA Navy G01 | 2 | ASE Emerald G01 | 2 | 2014 Spr PSPL SuperLeague U13 | 1.55 | 2.08 |
| 2014-11-22 | NW United Premier G01 | 0 | CWSA Navy G01 | 3 | 2014 PSPL Premier U13 | 1.06 | 3.92 |
| 2014-11-16 | CWSA Navy G01 | 0 | ISC Gunners A G01 | 1 | 2014 PSPL Premier U13 | 1.67 | 1.66 |
| 2014-11-01 | CWSA Navy G01 | 0 | Spokane Foxes Premier G01 | 0 | 2014 PSPL Premier U13 | 1.64 | 1.11 |
| 2014-10-26 | ASE Emerald G01 | 0 | CWSA Navy G01 | 1 | 2014 PSPL Premier U13 | 2.08 | 1.55 |
| 2014-10-19 | FC Spokane Black 1 G01 | 5 | CWSA Navy G01 | 4 | 2014 PSPL Premier U13 | 1.64 | 2.01 |
| 2014-10-18 | Spokane Foxes Premier G01 | 2 | CWSA Navy G01 | 1 | 2014 PSPL Premier U13 | 1.11 | 1.64 |
| 2014-10-11 | CWSA Navy G01 | 2 | ASE Emerald G01 | 1 | 2014 PSPL Premier U13 | 1.55 | 2.08 |
| 2014-09-28 | WA East G01 | 0 | CWSA Navy G01 | 2 | 2014 PSPL Premier U13 | 2.17 | 1.27 |
| 2014-09-20 | CWSA Navy G01 | 1 | WA East G01 | 3 | 2014 PSPL Premier U13 | 1.27 | 2.17 |
| 2014-09-14 | CDA Sting White Caps G01 | 1 | CWSA Navy G01 | 4 | 2014 PSPL Premier U13 | 1.35 | 2.41 |
| 2014-09-13 | CWSA Navy G01 | 1 | CDA Sting White Caps G01 | 1 | 2014 PSPL Premier U13 | 2.41 | 1.35 |
| 2014-09-06 | CWSA Navy G01 | 2 | FC Spokane Black 1 G01 | 1 | 2014 PSPL Premier U13 | 2.01 | 1.64 |
| 2014-08-10 | CWSA Navy G01 | 4 | Westside Timbers Copa G01 | 0 | 2014 Puma Rimland Pacific Cup Premier U1 | 1.88 | 0.80 |
| 2014-08-10 | CWSA Navy G01 | 2 | Whatcom FC Rangers Gold G01 | 3 | 2014 Puma Rimland Pacific Cup Premier U1 | 1.10 | 1.88 |
| 2014-08-09 | CWSA Navy G01 | 4 | Whatcom FC Rangers Blue G01 | 0 | 2014 Puma Rimland Pacific Cup Premier U1 | 2.14 | 0.91 |
| 2014-08-09 | NW United Premier G01 | 0 | CWSA Navy G01 | 4 | 2014 Puma Rimland Pacific Cup Premier U1 | 1.06 | 3.92 |

| date | home | | away | | venue | pred.home | pred.away |
|-------------|--------------------------------------|---|--------------------------------|---|--|------------------|------------------|
| 2014-08-08 | Coquitlam Metro Ford Renegades 2002G | 2 | CWSA Navy G01 | 3 | 2014 Puma Rimland Pacific Cup Premier U1 | 0.85 | 4.54 |
| 2014-07-27 | CWSA Navy G01 | 2 | Crossfire Select Granston G01 | 0 | 2014 Crossfire Select Cup GU13 Gold | 2.00 | 0.87 |
| 2014-07-27 | RSA Elite Heather G01 | 1 | CWSA Navy G01 | 2 | 2014 Crossfire Select Cup GU13 Gold | 0.94 | 1.31 |
| 2014-07-26 | CWSA Navy G01 | 3 | Crossfire Select Wilkinson G01 | 2 | 2014 Crossfire Select Cup GU13 Gold | 2.44 | 0.76 |
| 2014-07-26 | CWSA Navy G01 | 6 | Lake Hills Extreme G01 | 0 | 2014 Crossfire Select Cup GU13 Gold | 5.23 | 0.75 |
| 2014-07-25 | PCU Red G01 | 2 | CWSA Navy G01 | 4 | 2014 Crossfire Select Cup GU13 Gold | 0.78 | 2.55 |
| 2014-06-29 | CWSA Navy G01 | 1 | Eastside Timbers Red G01 | 4 | 2014 Clash At the Border Gold U13 | 0.69 | 2.68 |
| 2014-06-28 | Washington Timbers Red G01 | 6 | CWSA Navy G01 | 0 | 2014 Clash At the Border Gold U13 | 2.59 | 0.89 |
| 2014-06-28 | CWSA Navy G01 | 3 | Washington Timbers Green G01 | 0 | 2014 Clash At the Border Gold U13 | 1.70 | 0.92 |
| 2014-06-27 | Kitsap Pumas G01 | 0 | CWSA Navy G01 | 2 | 2014 Clash At the Border Gold U13 | 0.39 | 4.39 |